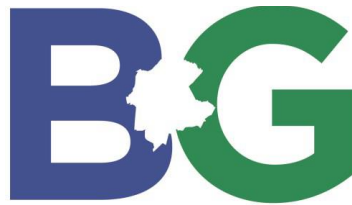


Appendix E:

Socioeconomic Analysis by BGADD



Bluegrass Area
Development
District



Frankfort Small Urban Area
Socioeconomic Study
April, 2018

[This page intentionally left blank]

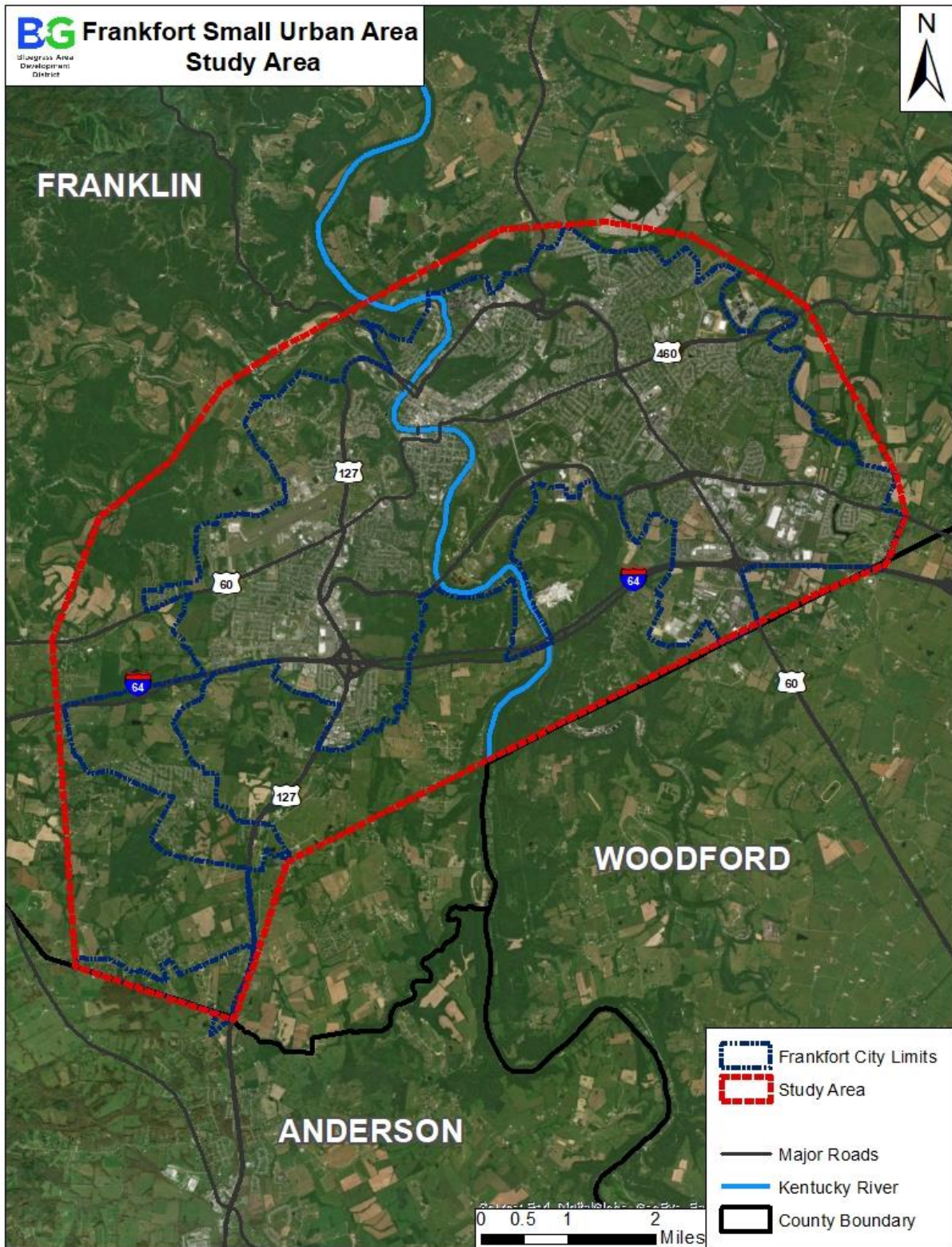
1.0 Introduction

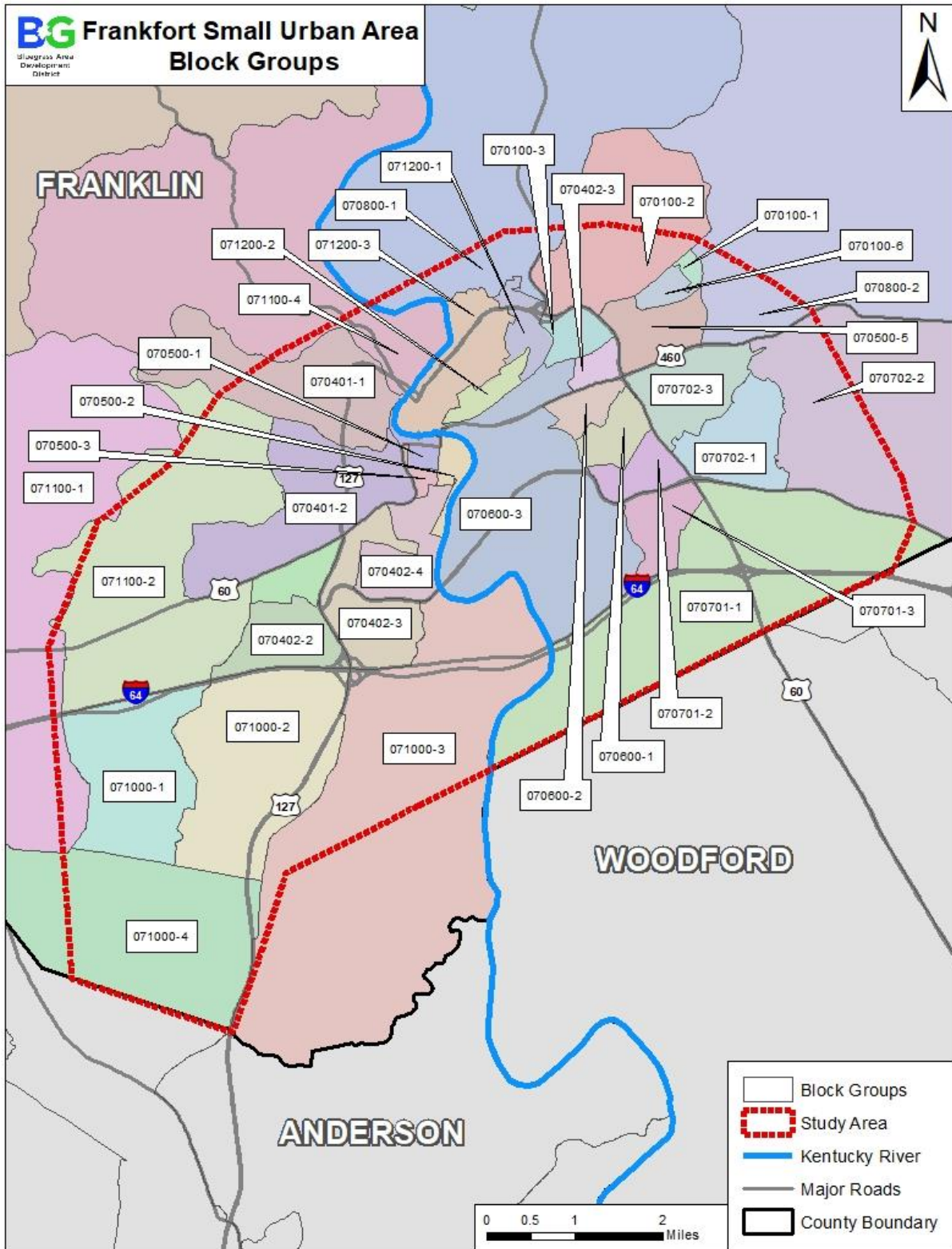
This study presents a review of the socioeconomic characteristics in the study area (indicated in map on next page) for the Frankfort Small Urban Area Study, which is located within the Bluegrass Area Development District (BGADD) in Franklin County. Data from the U.S. Census Bureau 2016 American Community Survey (ACS) has been utilized for the analysis of the study area. Please see the ACS website for more information, data limitations, and an explanation of the methodology used to obtain the data (<https://www.census.gov/acs/www/>). This report is intended to be used as a first look study into the socioeconomic characteristics that exist within the study area. If at a later time specific projects and project locations are identified, a more in-depth analysis of the socioeconomic characteristics may be warranted.

The information and results are intended to assist the Kentucky Transportation Cabinet (KYTC) in making informed and prudent transportation decisions in the study area, especially with regard to the requirements of *Executive Order 12898: Federal Actions to Address Environmental Justice in Minority Populations and Low-Income Populations* (signed February 11, 1994). Executive Order 12898 states:

“...each Federal agency shall make achieving environmental justice part of its mission by identifying and addressing, as appropriate, disproportionately high and adverse human health or environmental effects of its programs, policies, and activities on minority populations and low-income populations...”

This report outlines 2016 ACS 5-year estimates for the study area using tables and maps. Statistics are provided on minority, low-income, elderly, limited English proficiency, and disabled populations for the census tracts within the study area.





2.0 What is Environmental Justice?

The U.S. Environmental Protection Agency (EPA) Office of Environmental Justice (EJ) defines EJ as: “The fair treatment and meaningful involvement of all people regardless of race, color, national origin, or income with respect to the development, implementation and enforcement of environmental laws, regulations and policies. Fair treatment means that no group of people, including racial, ethnic, or socio-economic groups should bear a disproportionate share of the negative environmental consequences resulting from industrial, municipal, and commercial operations or the execution of federal, state, local and tribal programs and policies.”

While exact thresholds or benchmarks have not been established, and there is no further guidance on what “elevated” percentages of disadvantaged populations mean, for the purpose of this study “disproportionately high and adverse effect on a minority or low-income population” means an adverse effect that:

- 1) Is predominately borne by a minority population and/or low-income population, or
- 2) Will be suffered by the minority population and/or low-income population and is appreciably more severe or greater in magnitude than the adverse effect that will be suffered by the non-minority population and/or non-low-income population.

2.1 Definitions

United States Department of Transportation (U.S. DOT) Order 5610.2 on EJ, issued in the April 15, 1997 Federal Register, defines what constitutes low-income and minority population.

Low-Income is defined as a person whose median household income is at or below the U.S. Department of Health and Human Services poverty guidelines.

Minority is defined as a person who is: (1) Black (a person having origins in any black racial groups of Africa); (2) Hispanic (a person of Mexican, Puerto Rican, Cuban, Central or South American, or other Spanish culture or origin, regardless of race); (3) Asian American (a person having origins in any of the original peoples of the Far East, Southeast Asia, the Indian subcontinent, or the Pacific Islands); or (4) American Indian and Alaskan Native (a person having origins in any of the original people of North America and who maintains cultural identification through tribal affiliation or community recognition). A minority population is defined as any readily identifiable group of minority persons who live in geographic proximity and, if circumstances warrant, geographically dispersed/transient persons who will be similarly affected by a proposed U.S. DOT program, policy or activity.

Low-Income Population is defined as any readily identifiable group of low income persons who live in geographic proximity and, if circumstances warrant, geographically dispersed/transient persons who will be similarly affected by a proposed U.S. DOT program, policy or activity.

Elderly and disabled populations (also used in this analysis) are not specifically recognized under the definition of an Environmental Justice community. However, the U.S. DOT specifically encourages the early examination of potential populations of the elderly, children, disabled, and other populations protected by Title VI of the Civil Rights Act of 1964 and related nondiscrimination statutes.

Limited English Proficiency

The term Limited English Proficient (LEP) refers to any person age 5 and older who reported speaking English less than "very well" as classified by the U.S. Census Bureau. The term English proficient refers to people who reported speaking English only or "very well."

3.0 Methodology

Data for this study was collected by using the method outlined by the KYTC document “Methodology for Assessing Potential Environmental Justice Concerns for KYTC Planning Studies,” located in Exhibit B.

The primary source of data for this report was assembled from the ACS tables B03002 (Minority status), B17021 (Poverty status), C23023 (Disabled status), B16001, (Limited English Proficiency) and S0101 (Over 65 status) via the Fact Finder 2 website (factfinder2.census.gov) and Geographic Information System (GIS) data provided by KYTC.

In reviewing each census block group for target populations, an analysis range was determined based on the reference threshold in each of the five census categories reviewed in this report. For this study the threshold established was Franklin County’s percentages for each population. Within Franklin County Minority is 16.4%, Poverty is 14.8%, 65 and over is 16.0%, Disability status is 20.2%, and LEP is 1.6%.

4.0 Census Data Analysis

The U.S. Census Bureau defines geographical units as:

Census Tract (CT) – A small, relatively permanent statistical subdivision of a county or statistically equivalent entity delineated for data presentation purposes by a local group of census data users or the geographic staff of a regional census center in accordance with Census Bureau guidelines. CTs generally contain between 1,000 and 8,000 people. CT boundaries are delineated with the intention of being stable over many decades, so they generally follow relatively permanent visible features. They may also follow governmental unit boundaries and other invisible features in some instances; the boundary of a state or county is always a CT boundary.

Block Group (BG) – A statistical subdivision of a CT. A BG consists of all tabulation blocks whose numbers begin with the same digit in a CT. BGs generally contain between 300 and 3,000 people, with an optimum size of 1,500 people.

5.0 Study Findings

This Socioeconomic Study is to be used as a component of a Frankfort Small Urban Area Study currently being conducted by the KYTC Division of Planning for the City of Frankfort. This study is intended to identify areas of potential concern that may be affected by future projects proposed by the study. The purpose of the study is to provide a thorough examination of the area's transportation network. The study includes an analysis of existing and future traffic conditions with the goal of identifying needs for a transportation network that will efficiently move ever-increasing volumes of goods and travelers.

According to the ACS, there are 13 CT and a total of 39 BG that encompass the population of the study area.

The conclusion is that for all five categories examined: minority status, poverty status, age 65 and older, disabled status, and LEP, all had at least one BG with a percentage of the population above the County threshold. Four of the 39 BGs in the study area had a percentage above the County threshold in all five categories. Nine of the BGs had a percentage below the County threshold in all five categories.

6.0 Population by Persons of Minority Origin

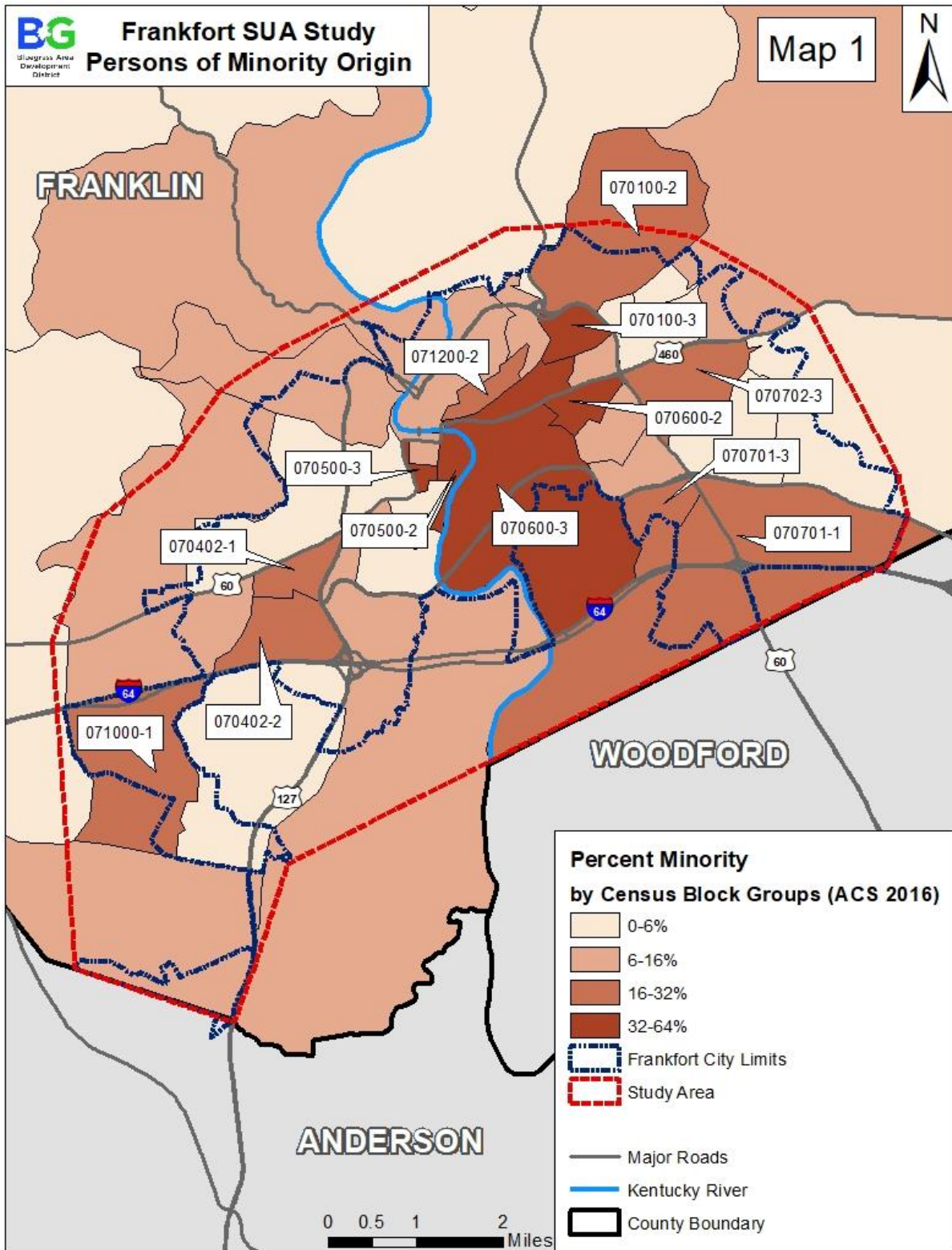
See Map 1 for reference

The total minority population for Franklin County is 16.2%. This is the established reference threshold for this category (see below). This percentage is above the state (14.6%) and below the U.S. (38.0%). For the study area, the following block groups were identified as having populations above the threshold established for persons of minority origin.

- CT 070100 - BG 3 (64.3%)
- CT 070600 – BG 3 (58.7%)
- CT 070600 – BG 2 (54.0%)
- CT 070500 – BG 2 (41.0%)
- CT 070500 – BG 3 (34.8%)
- CT 070402 – BG 2 (29.4%)
- CT 070702 – BG 3 (27.1%)
- CT 070100 – BG 2 (26.9%)
- CT 070701 – BG 3 (21.1%)
- CT 071200 – BG 2 (21.0%)
- CT 070701 – BG 1 (19.2%)
- CT 071000 – BG 1 (18.9%)
- CT 070402 – BG 1 (17.9%)

Reference Thresholds and Analysis Range (Franklin)

<u>Analysis range</u>	<u>Percent Minority</u>
Above Threshold	> 16.2%
Reference Threshold (County Percentage)	16.2%
Below Threshold	< 16.2%



7.0 Population by Below Poverty Status

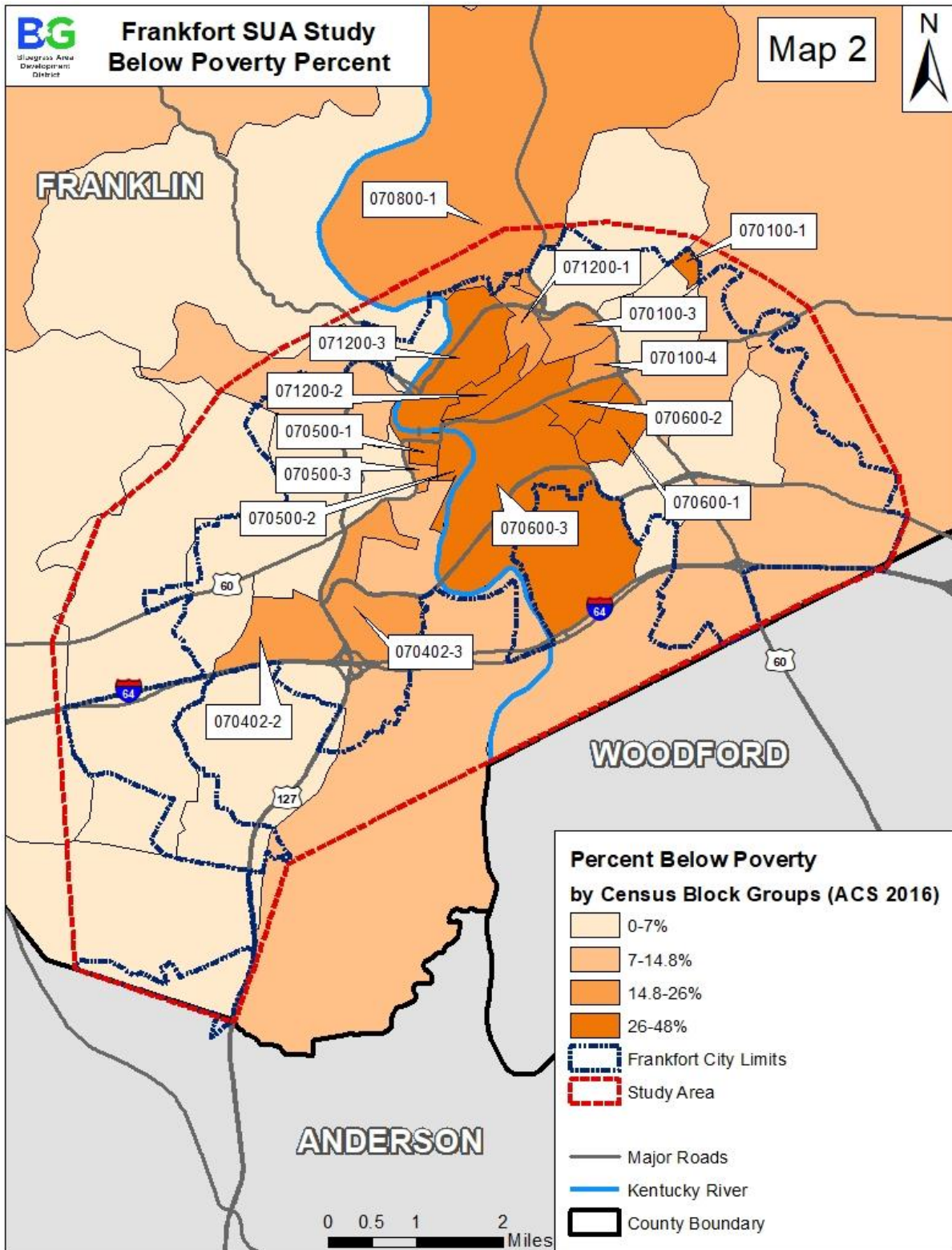
See Map 2 for reference

The total below poverty population for Franklin County is 14.8%. This is the established reference threshold for this category (see below). This percentage is below the state (18.8%) and above the U.S. (11.0%). For the study area, the following block groups were identified as having populations above the threshold established for persons below poverty status.

- CT 070600 – BG 1 (42.3%)
- CT 070500 – BG 2 (34.1%)
- CT 070600 – BG 2 (33.5%)
- CT 070100 – BG 1 (33.1%)
- CT 071200 – BG 3 (32.4%)
- CT 070500 – BG 1 (30.4%)
- CT 070600 – BG 3 (26.4%)
- CT 070402 – BG 2 (24.9%)
- CT 071200 – BG 1 (22.2%)
- CT 070800 – BG 1 (20.3%)
- CT 070100 – BG 4 (19.5%)
- CT 950100 – BG 2 (17.6%)
- CT 070402 – BG 3 (16.9%)
- CT 070500 – BG 3 (16.1%)
- CT 070100 – BG 3 (14.9%)

Reference Thresholds and Analysis Range (Franklin)

<u>Analysis range</u>	<u>Percent Below Poverty</u>
Above Threshold	> 14.8%
Reference Threshold (County Percentage)	14.8%
Below Threshold	< 14.8%



8.0 Population by Person 65 and Over

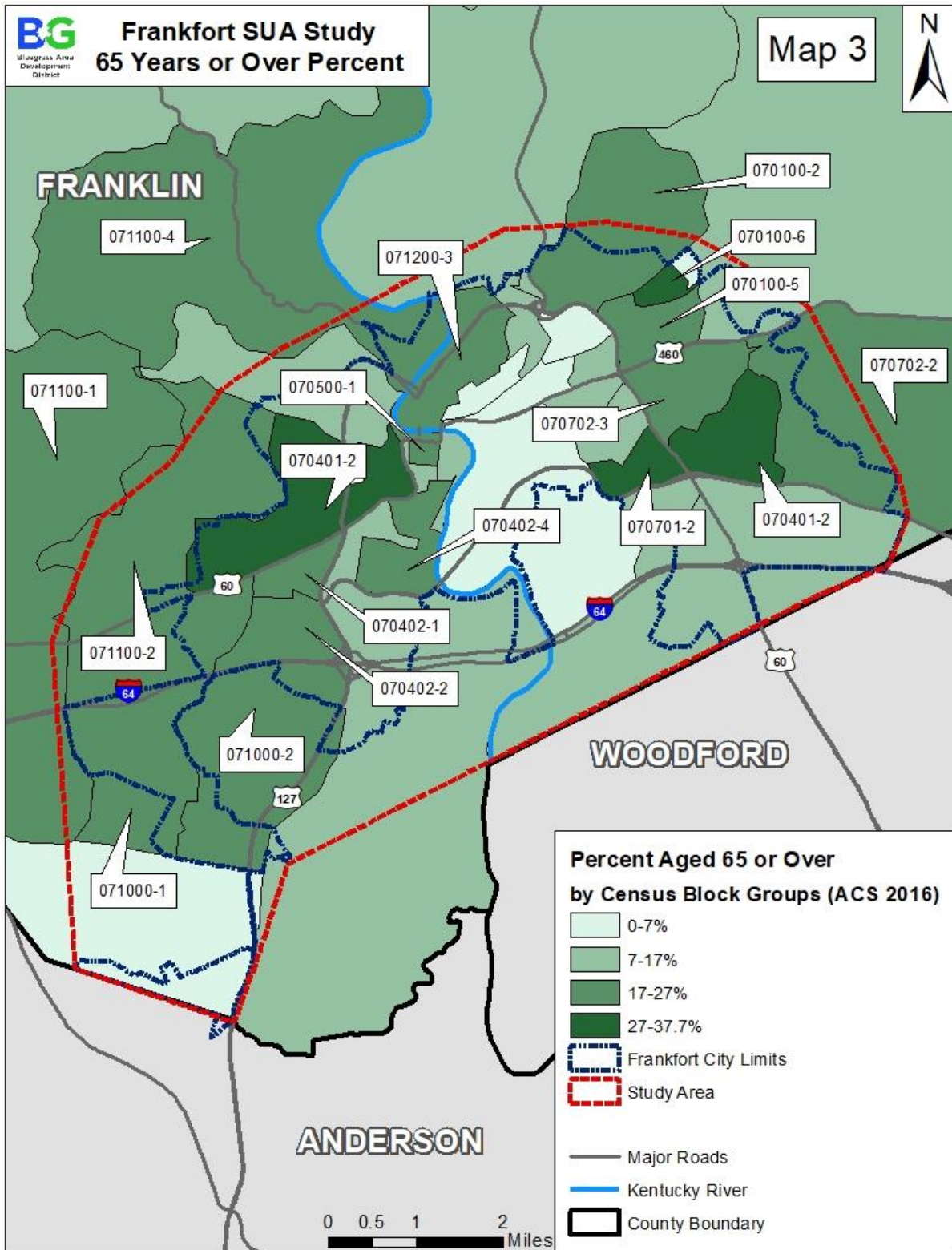
See Map 3 for reference

The total population of those 65 years of age or over for Franklin County is 17%. This is the established reference threshold (see below) for this category. This percentage above the state percent (14.8%) and the U.S. (14.5%). For the study area, the following block groups were identified as having populations above the threshold established for 65 and older.

- CT 070401 – BG 2 (37.7%)
- CT 070702 – BG 1 (34.0%)
- CT 070100 – BG 6 (32.9%)
- CT 070701 – BG 2 (31.9%)
- CT 070402 – BG 4 (26.7%)
- CT 070500 – BG 1 (26.3%)
- CT 070402 – BG 1 (25.1%)
- CT 071100 – BG 2 (24.7%)
- CT 070100 – BG 5 (23.4%)
- CT 070702 – BG 3 (22.8%)
- CT 070100 – BG 2 (20.9%)
- CT 070402 – BG 2 (20.2%)
- CT 071000 – BG 1 (20.0%)
- CT 071100 – BG 1 (18.9%)
- CT 071100 – BG 4 (18.7%)
- CT 071000 – BG 2 (18.1%)
- CT 071200 – BG 3 (17.3%)
- CT 070702 – BG 2 (17.2%)

Reference Thresholds and Analysis Range (Franklin)

<u>Analysis range</u>	<u>Percent 65 and Over</u>
Above Threshold	> 17%
Reference Threshold (County Percentage)	17%
Below Threshold	< 17%



9.0 Population by Disability Status

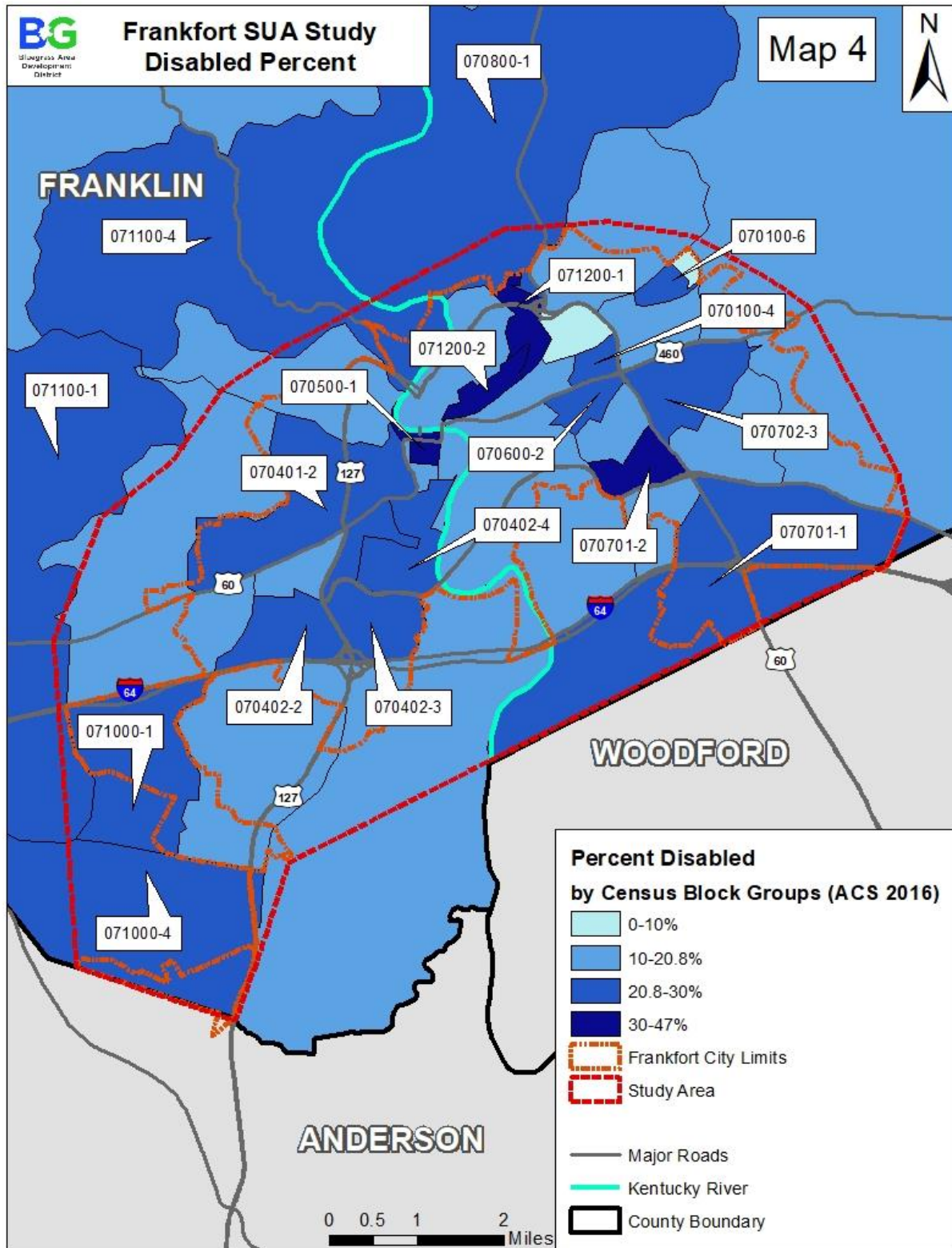
See Map 4 for reference

The total population claiming disability status in Franklin County is 20.8%. This is the established reference threshold (see below) for this category. This percentage is above the state percent (15.6%) and above the U.S. (12.5%). For the study area, the following block groups were identified as having populations above the threshold established for persons of disability status.

- CT 070500 – BG 1 (46.4%)
- CT 071200 – BG 1 (40.1%)
- CT 071200 – BG 2 (38.3%)
- CT 070701 – BG 2 (34.0%)
- CT 070402 – BG 4 (29.6%)
- CT 070401 – BG 2 (28.6%)
- CT 070402 – BG 3 (27.4%)
- CT 071100 – BG 1 (26.9%)
- CT 070600 – BG 2 (26.3%)
- CT 070402 – BG 2 (26.1%)
- CT 071100 – BG 4 (24.5%)
- CT 071000 – BG 4 (23.4%)
- CT 070702 – BG 3 (22.8%)
- CT 070100 – BG 6 (22.5%)
- CT 070800 – BG 1 (21.7%)
- CT 070100 – BG 4 (21.5%)
- CT 071000 – BG 1 (21.2%)
- CT 070701 – BG 1 (21.0%)

Reference Thresholds and Analysis Range (Franklin)

<u>Analysis range</u>	<u>Percent Disabilities</u>
Above Threshold	> 20.8%
Reference Threshold (ADD Percentage)	20.8%
Below Threshold	< 20.8%



10.0 Population Limited English Proficiency

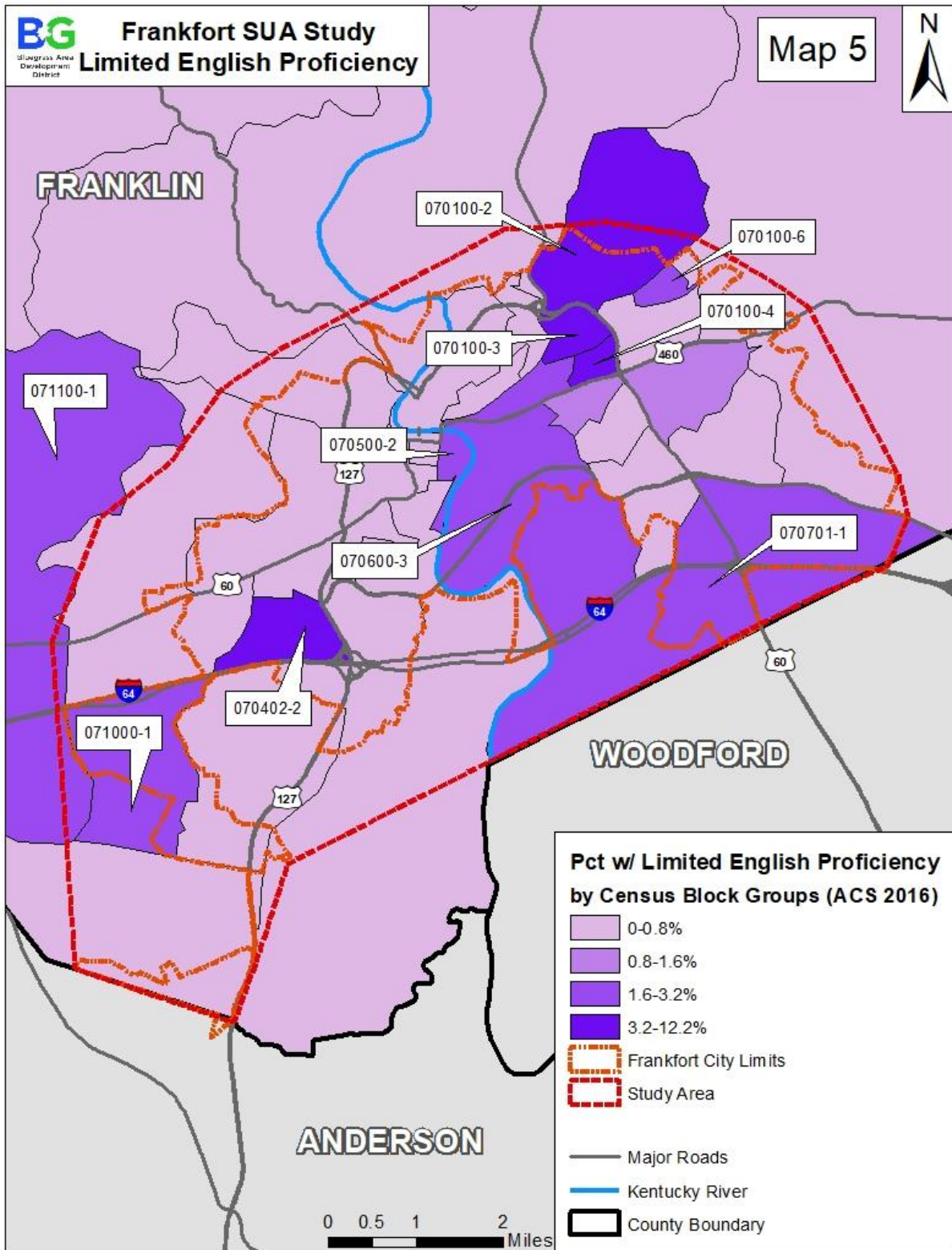
See Map 5 for reference

The total population claiming limited English proficiency status in Franklin County is 1.6%. This is the established reference threshold (see below) for this category. This percentage is below the state percent (2.0%) and below the U.S. (7.9%). For the study area, the following block groups were identified as having populations above the threshold established for persons with limited English proficiency.

- CT 070402 – BG 2 (12.2%)
- CT 070100 – BG 3 (10.3%)
- CT 070100 – BG 2 (10.2%)
- CT 070100 – BG 4 (8.6%)
- CT 071100 – BG 1 (3.2%)
- CT 070701 – BG 1 (3.0%)
- CT 071000 – BG 1 (2.6%)
- CT 070100 – BG 6 (2.1%)
- CT 070500 – BG 2 (2.0%)
- CT 070600 – BG 3 (2.0%)

Reference Thresholds and Analysis Range (Franklin)

<u>Analysis range</u>	<u>Percent Disabilities</u>
Above Threshold	> 1.6%
Reference Threshold (ADD Percentage)	1.6%
Below Threshold	< 1.6%



11.0 Conclusion

The conclusion is that all five of the categories examined: minority status, poverty status, disabled status, and limited English proficiency, had at least one Block Group with a percentage of the population above the County threshold. Four of the 39 BGs in the study area had a percentage above the County threshold in all five categories. Nine of the BGs had a percentage below the County threshold in all five categories.

The methodologies used in this planning document are appropriate for identifying possible areas of concern in small urban areas and potential project corridors. However, during future phases of project development a more detailed and robust analysis would be required for the NEPA documentation when assessing the potential for adverse and disproportionate impacts to minority, low-income, elderly, disabled, and limited English proficiency populations.

EXHIBIT A: Affected Census Tract and Block Group Table

		Total Pop	Minority	Poverty	65 and Over	Disability	LEP
United States		318,558,162	38.0%	11.0%	14.5%	12.5%	7.9%
Kentucky		4,411,989	14.6%	18.8%	14.8%	15.6%	2.0%
Franklin County		49,982	16.2%	14.8%	17.0%	20.8%	1.6%
Census Tract	Block Group						
050300	2	1,276	4.0%	10.0%	15.6%	14.8%	1.4%
070100	1	1,021	9.0%	33.1%	1.2%	9.9%	0.0%
070100	2	1,429	26.9%	4.1%	20.9%	11.8%	10.2%
070100	3	1,578	64.3%	14.9%	2.1%	8.3%	10.3%
070100	4	672	14.1%	19.5%	15.2%	21.5%	8.6%
070100	5	738	1.6%	0.0%	23.4%	14.9%	0.0%
070100	6	611	5.2%	4.4%	32.9%	22.5%	2.1%
070401	1	1,743	12.8%	13.8%	10.0%	14.6%	0.0%
070401	2	954	6.0%	2.8%	37.7%	28.6%	0.0%
070402	1	1,050	17.9%	3.0%	25.1%	18.6%	0.0%
070402	2	2,004	29.4%	24.9%	20.2%	26.1%	12.2%
070402	3	1,051	7.7%	16.9%	15.2%	27.4%	0.0%
070402	4	1,305	0.0%	8.3%	26.7%	29.6%	0.0%
070500	1	514	7.2%	30.4%	26.3%	46.4%	0.0%
070500	2	1,122	41.0%	34.1%	16.3%	11.4%	2.0%
070500	3	448	34.8%	16.1%	16.5%	18.5%	0.0%
070600	1	1,265	10.1%	42.3%	11.7%	16.5%	0.0%
070600	2	1,520	54.0%	33.5%	9.5%	26.3%	1.4%
070600	3	2,237	58.7%	26.4%	5.0%	16.4%	2.0%
070701	1	2,147	19.2%	12.0%	13.3%	21.0%	3.0%
070701	2	769	13.3%	3.3%	31.9%	34.0%	0.0%
070701	3	1,014	21.1%	5.3%	11.2%	15.0%	0.0%
070702	1	1,145	0.0%	0.0%	34.0%	13.2%	0.0%
070702	2	1,244	2.2%	12.6%	17.2%	13.4%	0.0%
070702	3	2,725	27.1%	9.4%	22.8%	22.8%	0.9%
070800	1	1,644	5.1%	20.3%	12.8%	21.7%	0.0%
070800	2	1,954	7.3%	11.3%	12.7%	10.8%	0.3%
071000	1	1,430	18.9%	1.0%	20.0%	21.2%	2.6%
071000	2	1,217	5.8%	4.2%	18.1%	16.0%	0.0%
071000	3	1,742	11.9%	12.9%	11.4%	17.6%	0.1%
071000	4	1,032	13.4%	4.6%	6.6%	23.4%	0.0%
071100	1	1,816	5.5%	5.7%	18.9%	26.9%	3.2%
071100	2	1,517	7.8%	5.8%	24.7%	19.3%	0.0%
071100	4	937	10.5%	3.2%	17.3%	24.5%	0.0%
071200	1	781	7.6%	22.2%	18.7%	40.1%	0.0%
071200	2	1,217	21.0%	48.0%	13.8%	38.3%	0.0%
071200	3	1,742	12.5%	32.4%	5.0%	13.9%	0.0%
950100	1	2,840	1.9%	8.1%	12.9%	13.5%	0.0%
950100	2	2,416	6.7%	17.6%	8.1%	13.8%	0.0%

EXHIBIT B:

Methodology for Assessing Potential Environmental Justice Concerns for KYTC Planning Studies

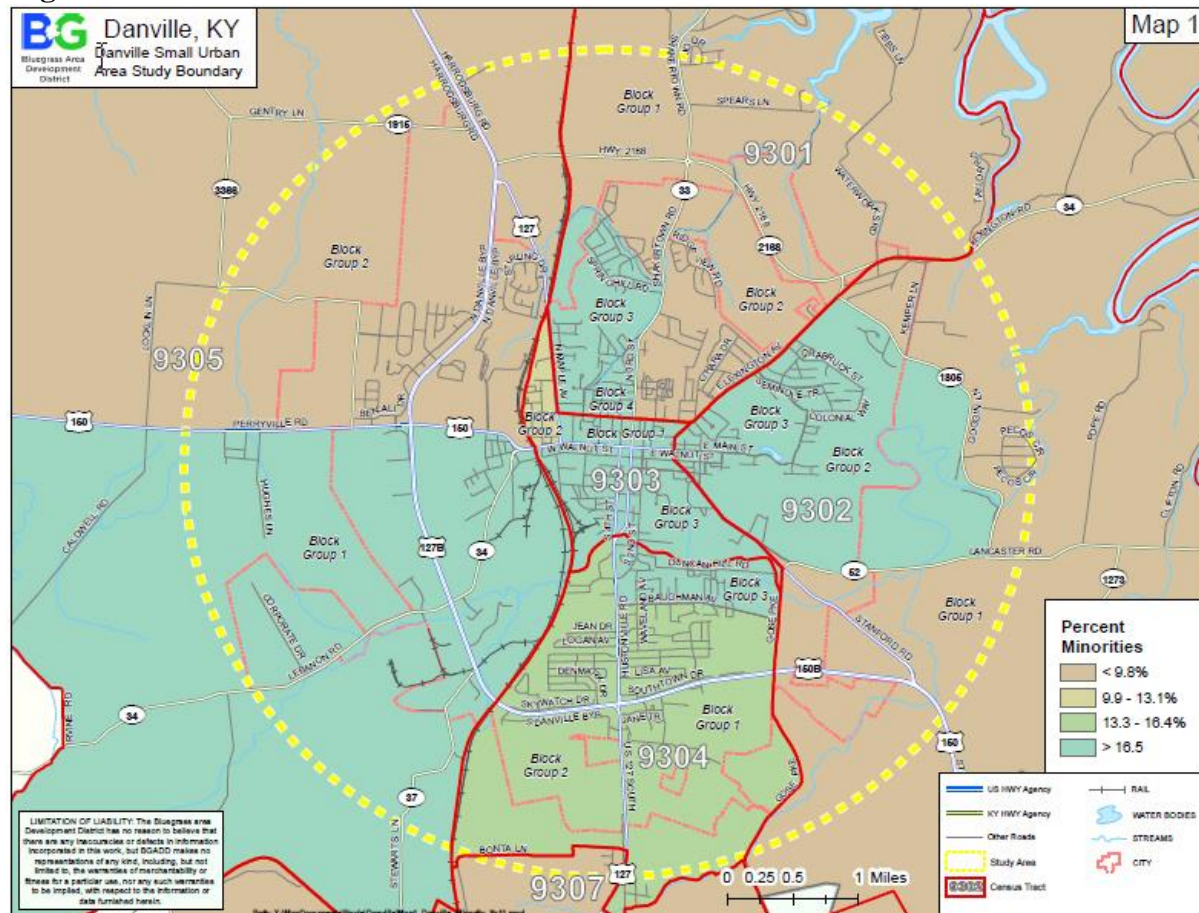
Updated: September 2014

The methodologies used in this planning document are appropriate for identifying possible areas of concern in small urban areas and potential project corridors. However, during future phases of project development a more detailed and robust analysis would be required for the NEPA documentation when assessing the potential for adverse and disproportionate impacts to low-income and minority populations.

A map or shapefile of the alternatives will be provided by the consultant or KYTC to the applicable Area Development District (ADD). KYTC, in conjunction with the consultant, will review the ADD data for quality and completeness. The consultant will summarize the information provided by the ADD in the final report. The full Socioeconomic analysis should be placed in an Appendix for reference as necessary.

Maps should be included with the analysis that depict the project area in relation to the Census tracts and block groups included in the analysis. Maps similar to **Figure 1** should be symbolized utilizing and appropriate range dependent on the relevant data being studied.

Figure 1



Additional Information

The below information may be beneficial to note for future reference

- Changes due to new residential developments in the area
- Increases in Asian and/or Hispanic populations.
- Concentrations or communities that share a common religious, cultural, ethnic, or other background, e.g., Amish communities.
- Communities or neighborhoods that exhibit a high degree of community cohesion or interaction and the ability to mobilize community actions at the start of community involvement.
- Concentrations of common employment, religious centers, and/or educational Institutions.

Tips:

- Only include data that is being analyzed. For instance, there is no need to define Block Groups if they are not used. Similarly, Census Tracts should only be referenced as they relate to location of Block Groups discussed.
- Choropleth maps (shaded, color gradation) should be developed based on population percentage.
- 1 page summary facing the adjacent related map is a functional, readily relatable format.
- At this stage, there is no proposed alignment, therefore we can make no assumptions regarding adverse impacts or mitigation efforts to any populations. We can only identify potential locations of Affected Communities.

Applicable Laws, Acts and Executive Orders

Civil Rights Act of 1964, Title VI (42 USC 2000d et seq.) -This title declares it to be the policy of the United States that discrimination on the grounds of race, color, or national origin shall not occur in connection with programs and activities receiving federal financial assistance, and authorizes and directs the appropriate federal departments and agencies to take action to carry out this policy. The Presidential Memorandum accompanying Executive Order 12898 states that in accordance with this title, each federal agency should ensure that all programs or activities receiving federal financial assistance that affect human health or the environment do not directly, or through contractual or other arrangements, use criteria, methods, or practices that discriminate on the basis of race, color, or national origin.

Age Discrimination Act of 1975 - 42 U.S.C. 6101, provides: No person in the United States shall, on the basis of age, be excluded from participation in, be denied the benefits of, or be subjected to discrimination under any program or activity receiving Federal financial assistance.

Rehabilitation Act of 1973, Section 504 - 42 U.S.C. 794, et seq., provides: No qualified handicapped person shall, solely by reason of his handicap, be excluded from participation in, be denied the benefits of, be subjected to discrimination under any program or activity that receives or benefits from Federal financial assistance.

Americans With Disabilities Act of 1990 - 42 U.S.C. 12131, et seq., provides: No qualified individual with a disability shall, by reason of such disability, be excluded from the participation in, be denied the benefits of, or be subjected to discrimination by a department, agency, special purpose district, or other instrumentality of a State or local government.

Executive Order #12898 - (Environmental Justice) directs federal agencies to develop strategies to address disproportionately high and adverse human health or environmental effects of their programs on minority and low-income populations.

Executive Order #13166 - (Limited-English-Proficiency) directs federal agencies to evaluate services provided and implement a system that ensures that Limited English Proficiency persons are able to meaningfully access the services provided consistent with and without unduly burdening the fundamental mission of each federal agency.



This document was prepared in cooperation with the
Kentucky Transportation Cabinet, 2018